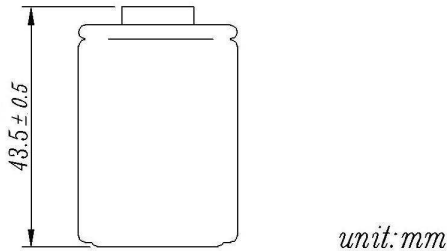
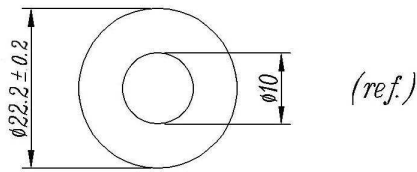


Sealed Rechargeable Cylindrical cell Nickel Metal Hydride

SC-3000 mAh



Date Sheet

Type-----EnrichpowerSC3000

System-----Sealed rechargeable Ni-MHCylindrical cell

Nominal Voltage-----1.2V

Application-----Discharge current300mA to 30A (Continuous)

Capacity (discharged at 0.2C to 1.0v at 20°C)

Nominal 3000mAh

Minimum 2900mAh

Typical 3000mAh

Internal resistance (at 1 kHz)

Fully charged,20°C(approx)---4 ~ 6mΩ

Weight approx-----53g

Dimensions(including shrink sleeve)

-Diameter -----22.2(±0.2mm)

-Height -----43.5(±0.5mm)

Cd content(%cell w):-----0%

Typical Discharge time&Avg.Voltage (20°C)

30A--350S--1.15V (TURBOMATCHER,discharged at 30A to 0.9v at 20°C)

Max.discharge current(continuous)----20C

Charging conditions(20°C)

standard charge-----300mA 14h

quick charge-----3000mA 1.1h

fast charge -----2A to 6A

Charge termination control recommended control parameter

-ΔV 5mV

DT/dt 0.8°C/min(0,5-1C)

0,8°C-1°C/min(>1C)

TCO 40-45°C

Timer 105%nominal input

Continuous 100mA maximum current for 1 year

Overcharge No conspicuous deformation and/or leakage

Max.charging voltage 1.5V at 300mA charging

Operation temperatures(recommended)

Storage----- -20°C up to +35°C

Discharge----- -20°C up to +50°C

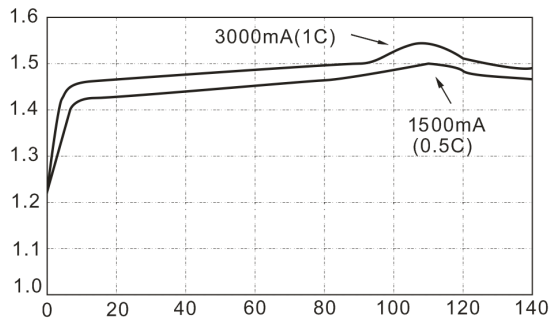
standard charge----- 0°C up to +40°C

quickcharge,fastcharge—10°C upto+40°C

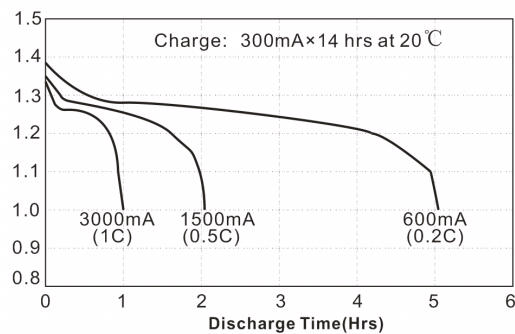
permanent charge-----+10°C up to +45°C

Life expectancy(20°C)----->500 cycles

Fast Charge (Charge Control required)
Voltage(V)



Low Rate Discharge
Voltage(V)



High Rate Discharge
Voltage(V)

