

INSTRUCTION

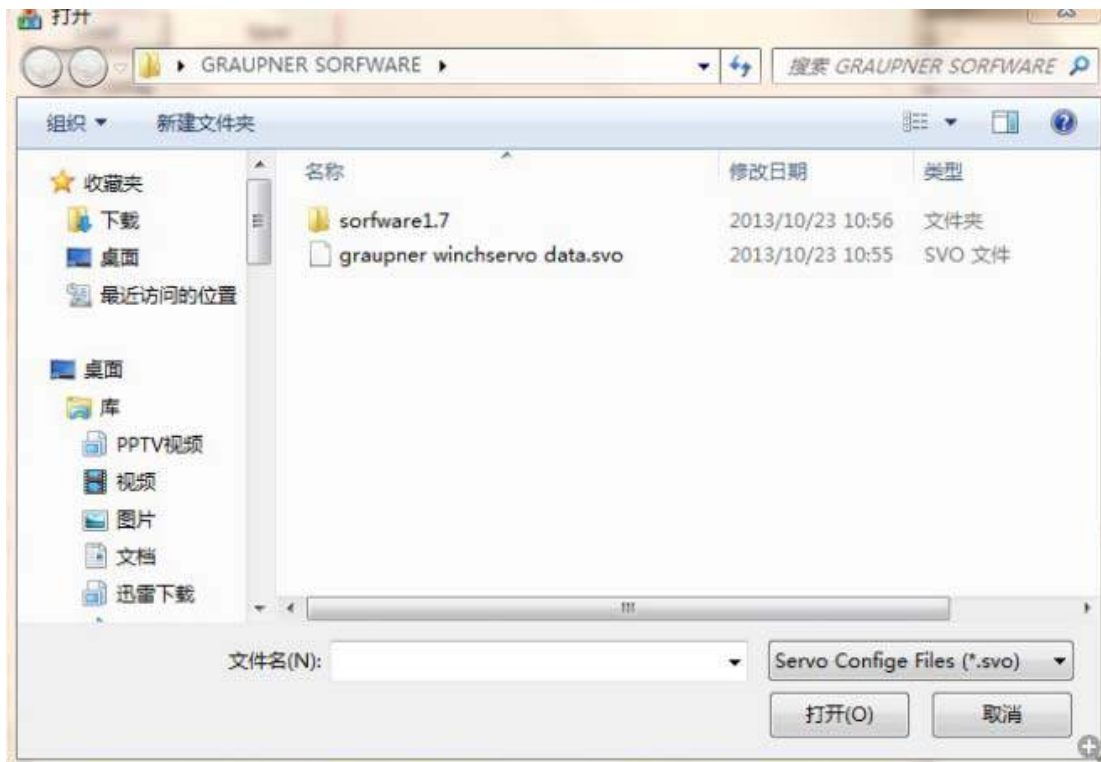
1. Download the folder “GRAUPNER SORFWARE” to your computer.

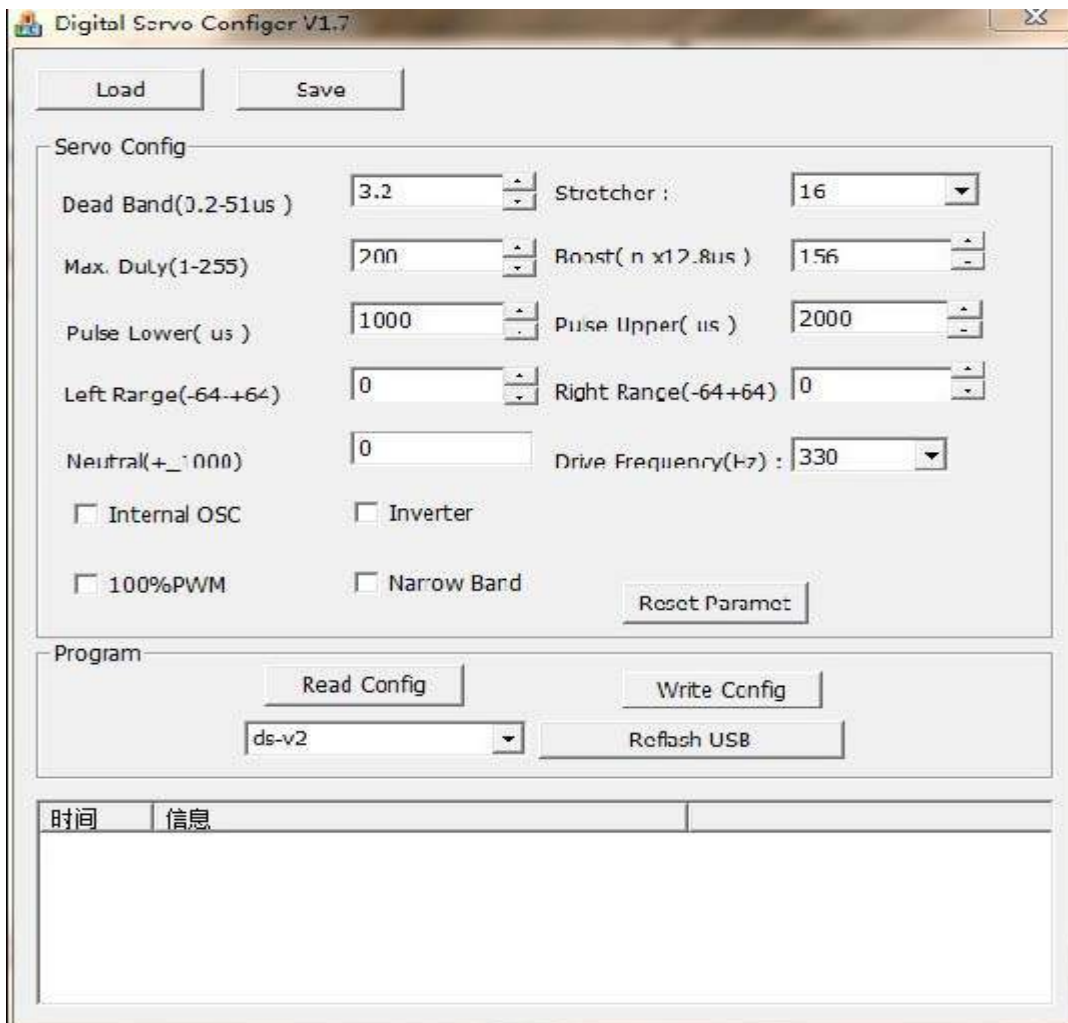


2. Connect the programming card to your computer, the driver will be installed automatically.
3. Connect the servo to the programming card as shown image.

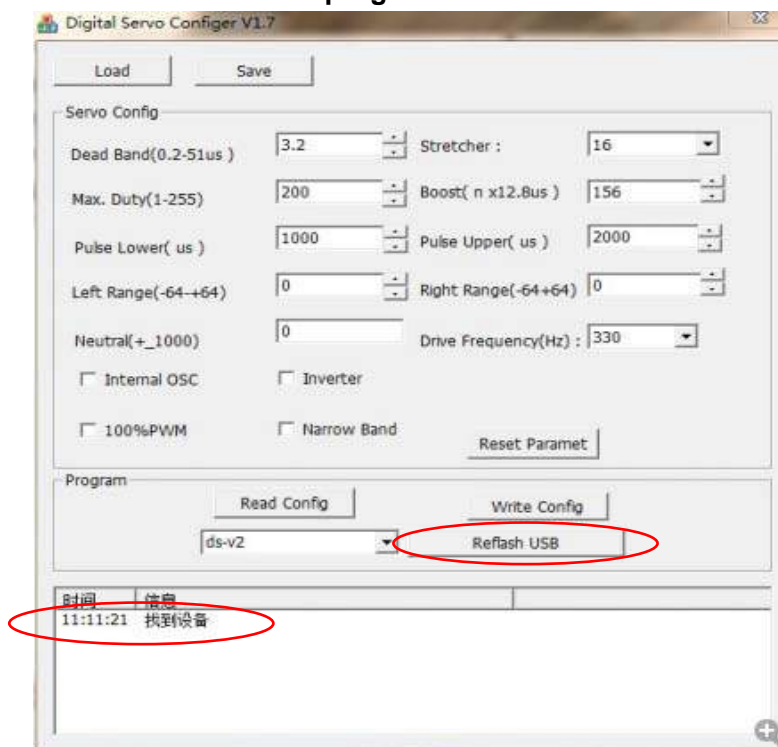


4. Open the folder “GRAUPNER SORFWARE” and then open the folder “software1.7”

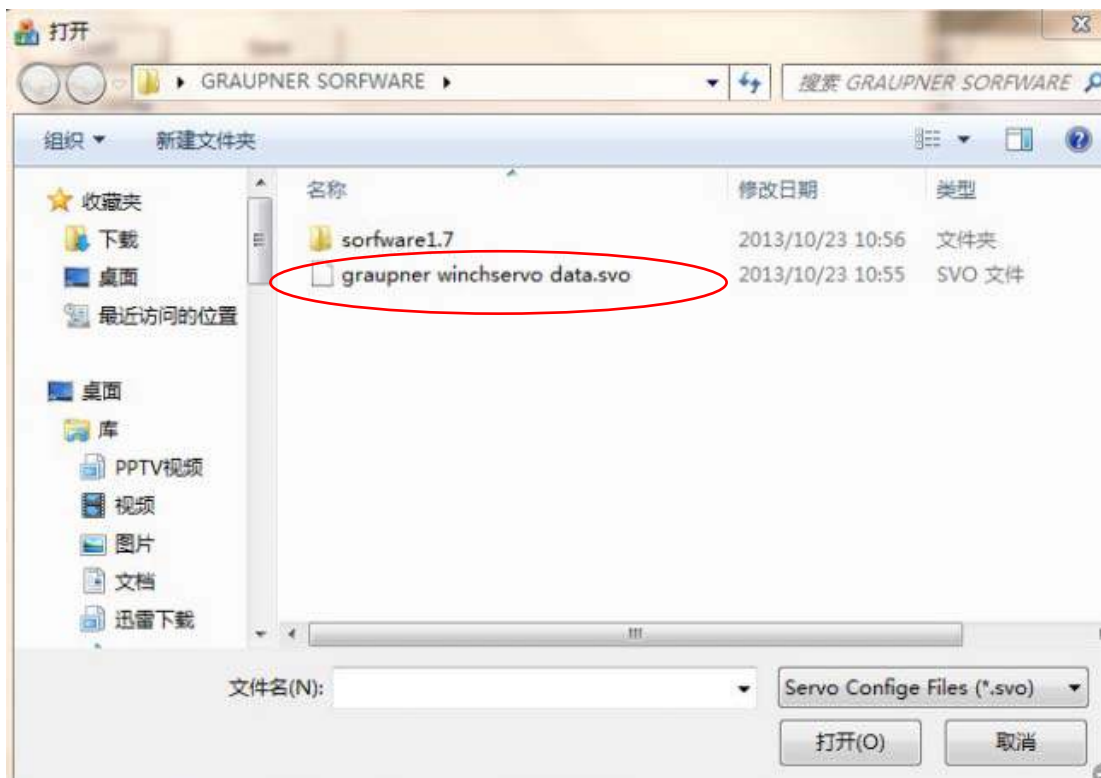
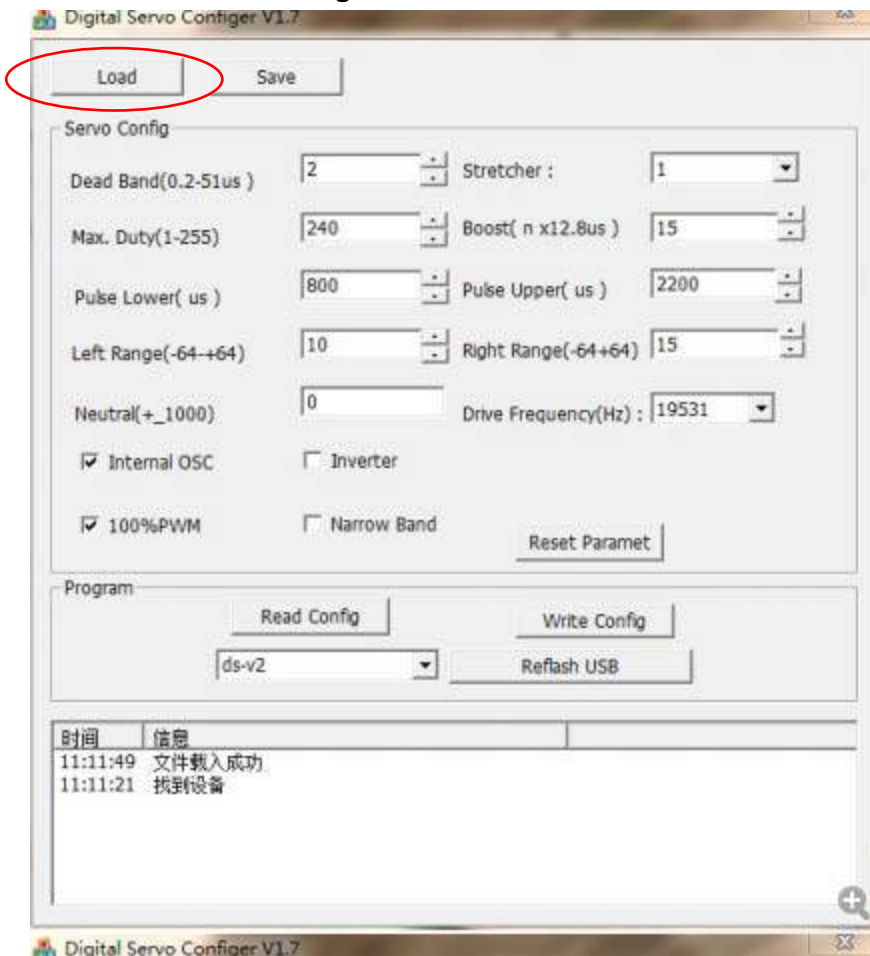




5. Click “Reflash USB”, the information column will show “找到设备(device is found)”, it means the software can be programmed now.



6. Click “Load” and select the file “graupner winchservo data.svo” to load the pre-set servo data. And some data is changed now.



7. Click “Write Config”, the information column will show “成功: 写入 EEPROM 成功”, it means the revised data is read in to the servo. Replace another servo to the programming card and click “Write Config”...

